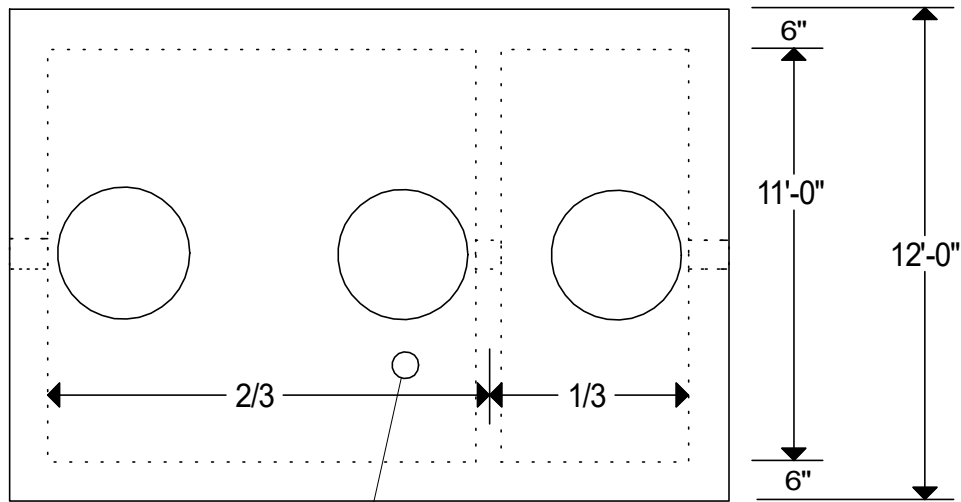
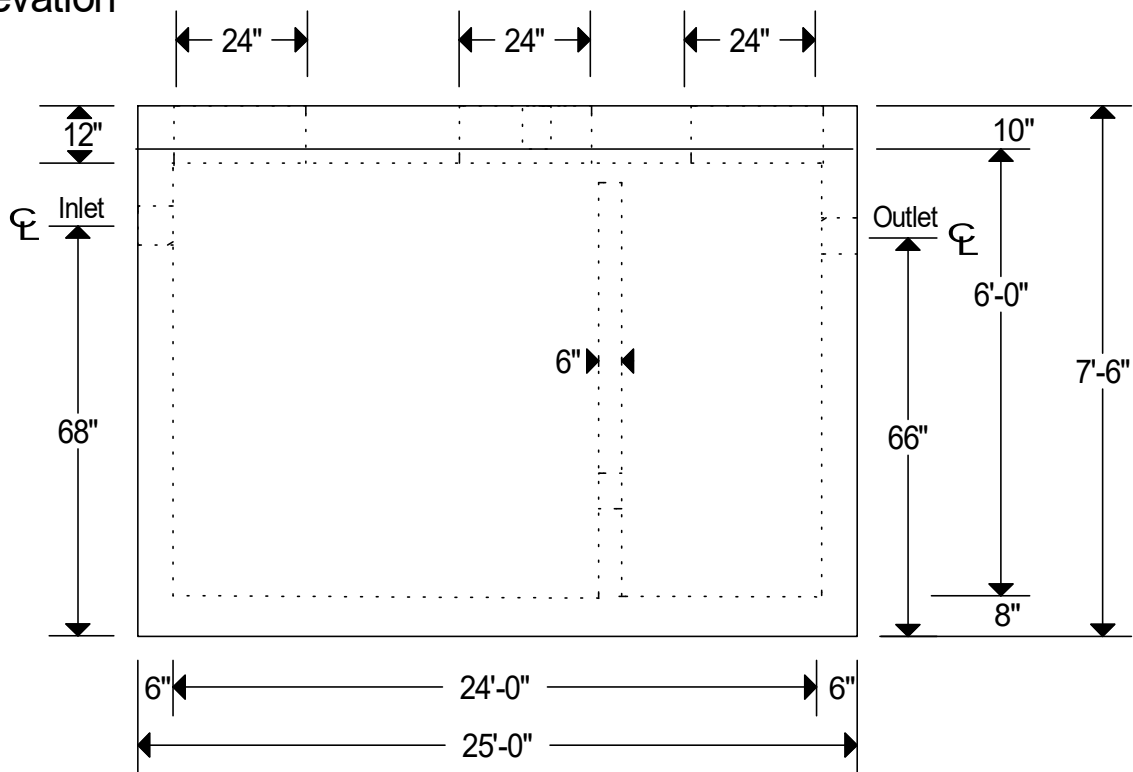


Plan



Elevation



Notes:

Monolithic Poured Floor.

Reinforcement: Walls & Bottom- #5 @ 6" O.C.E.W.

Cover- #5 @ 6" O.C.E.W., #5 Diagonally Around Holes

2- 4"/6" High Pressure Boots On Standard Inlet & Outlet

And 1- 2" High Pressure Boot On Vent.

Weight: Box 68,000 lbs., Cover 45,000 lbs.

Baffle Height & Location Of Holes Per Local Code For Each Installation.

Installation Of Pipe Should Be According To Local Code.

Secondary Compartment Has A Volume Equal To 1/3 Of Total Volume.

5,000 P.S.I. Minimum Strength Concrete.

We Produce A Green And Environmentally Friendly Product.

Traffic H-20 Loading.



9,000 Gallon  
Grease Or Sand & Oil Interceptor  
No Scale  
Page 67