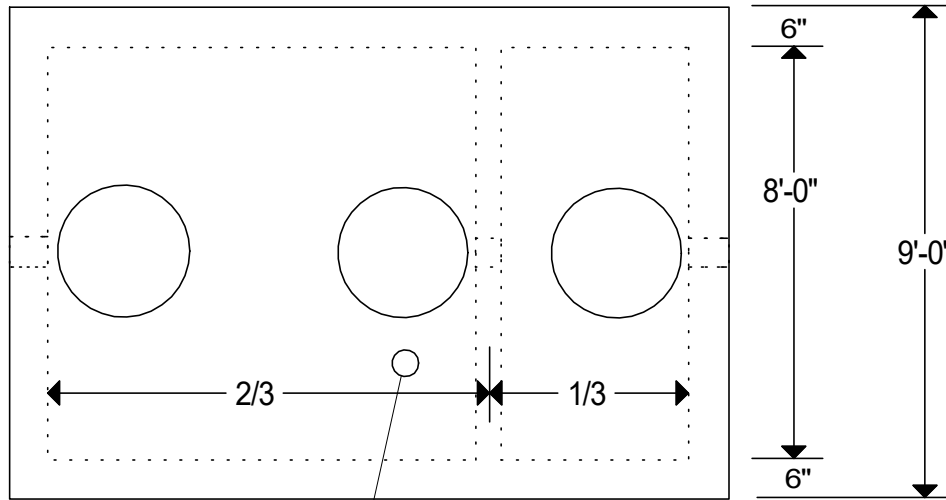
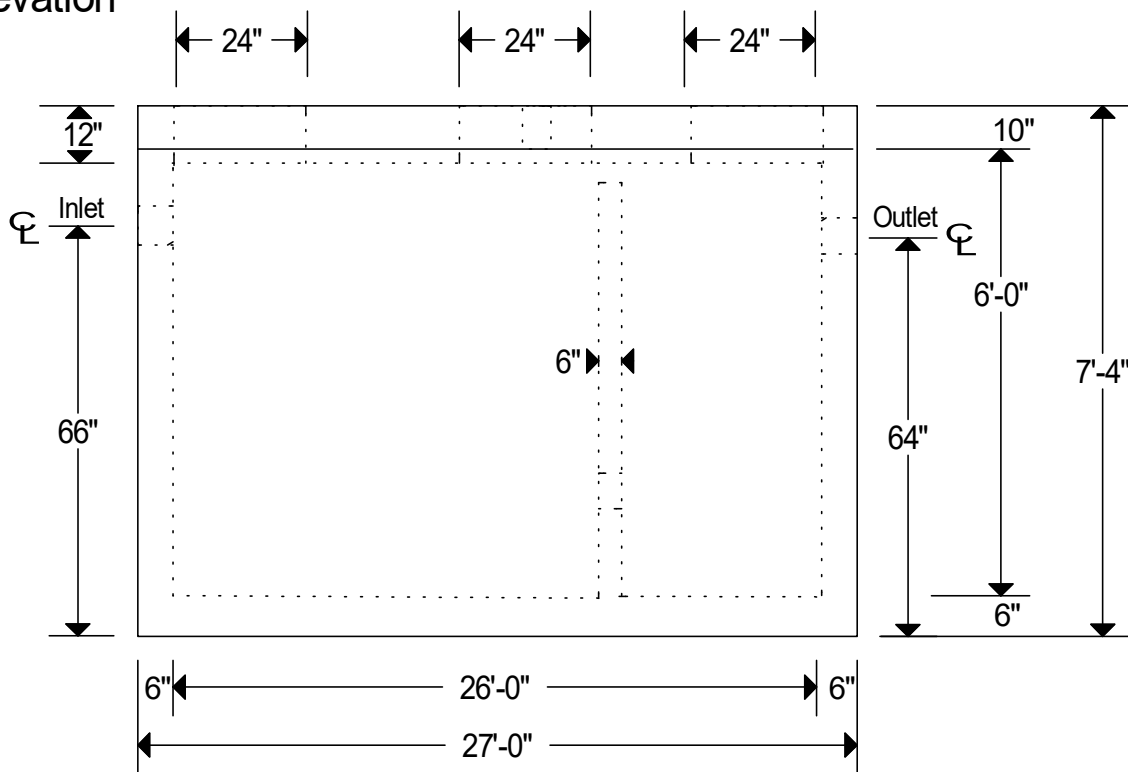


Plan



Elevation



Notes:

- Monolithic Poured Floor.
- Reinforcement: Walls & Bottom- #5 @ 12" O.C.E.W.
- Cover- #5 @ 8" O.C.E.W., #5 Diagonally Around Holes
- 2- 4"/6" High Pressure Boots On Standard Inlet,Outlet And 1- 2" High Pressure Boot On Vent.
- Weight: Box 49,000 lbs. (LT WT), Cover 36,500 lbs.
- Baffle Height & Location Of Holes Per Local Code For Each Installation.
- Installation Of Pipe Should Be According To Local Code.
- Secondary Compartment Has A Volume Equal To 1/3 Of Total Volume.
- 5,000 P.S.I. Minimum Strength Concrete.
- We Produce A Green And Environmentally Friendly Product.
- Traffic H-20 Loading.



7,000 Gallon
Grease Or Sand & Oil Interceptor
No Scale
Page 65