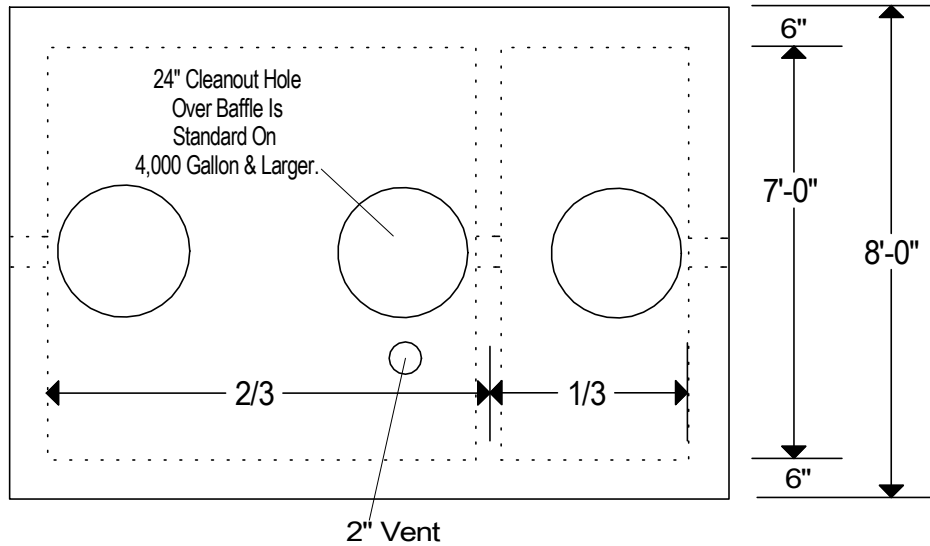
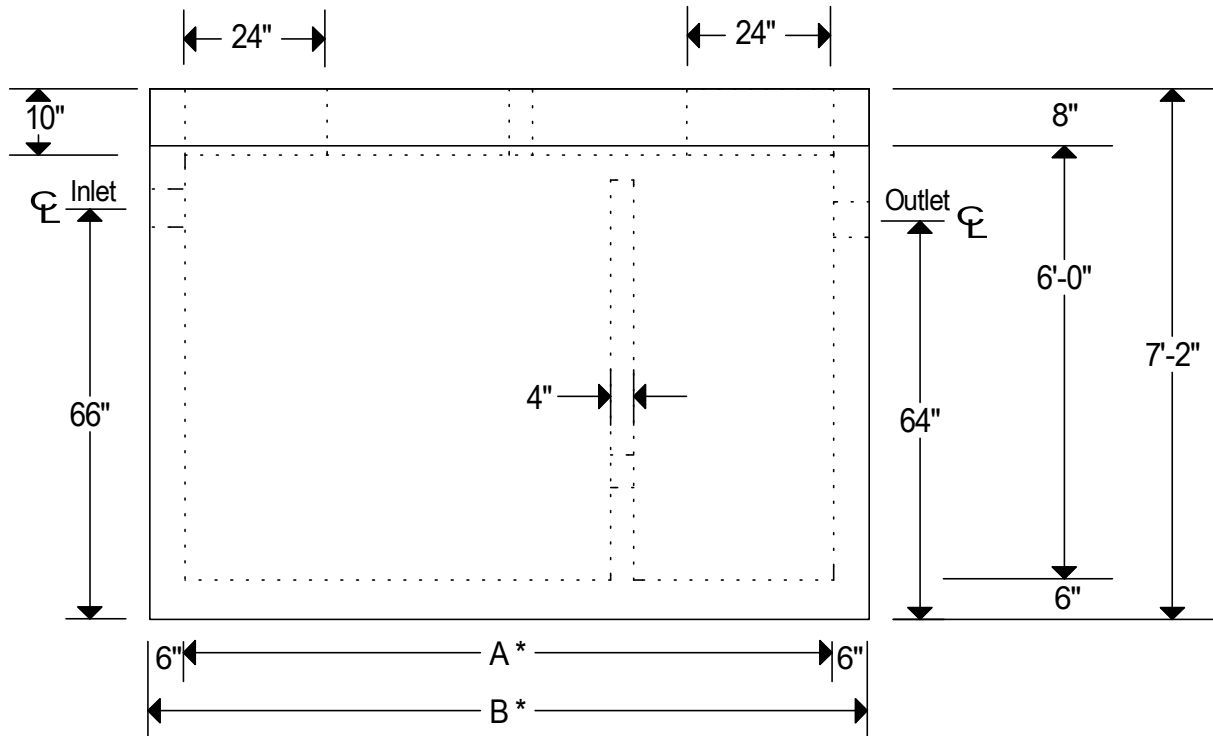


# Plan



# Elevation



Notes: \* Dimensions & Weights On Page 63A  
 Poured Monolithic.  
 Reinforcement: Walls & Bottom- #4 @ 12" O.C.E.W.  
 Cover- #5 @ 8" O.C.E.W., #5 Diagonally Around Holes  
 Lifting Plan: Box Uses Wire Rope Anchors (WR063)  
 & Lid Uses Wire Rope Anchors (WR063)  
 (2)- 4"/6" High Pressure Boots On Standard Inlet & Outlet  
 And (1)- 2" High Pressure Boot On Vent.  
 Baffle Height & Location Of Holes Per Local Code For Each Installation.  
 Installation Of Pipe Should Be According To Local Code.  
 Secondary Compartment Has A Volume Equal To 1/3 Of Total Volume.  
 5,000 P.S.I. Minimum Strength Concrete.  
 We Produce A Green And Environmentally Friendly Product.  
 Traffic H-20 Loading.



3,500 To 5,000 Gallon  
 Grease Or Sand & Oil Interceptors  
 No Scale  
 Page 63

## Dimensions & Weights For Page 63

Gallons	A	B	Box-Weight	Lid-Weight	Concrete Type
3500	15'-0"	16'-0"	33,000	16,000	SCC-5000
4000	17'-0"	18'-0"	32,000	18,000	SCC-5000
4500	19'-0"	20'-0"	39,000	20,000	SCC-5000
5000	21'-0"	22'-0"	42,000	22,000	SCC-5000

\*4,000 Gallon Box Needs SCC-LT/WT In Walls



3,500 To 5,000 Gallon  
Grease Or Sand & Oil Interceptors  
No Scale Page 63A