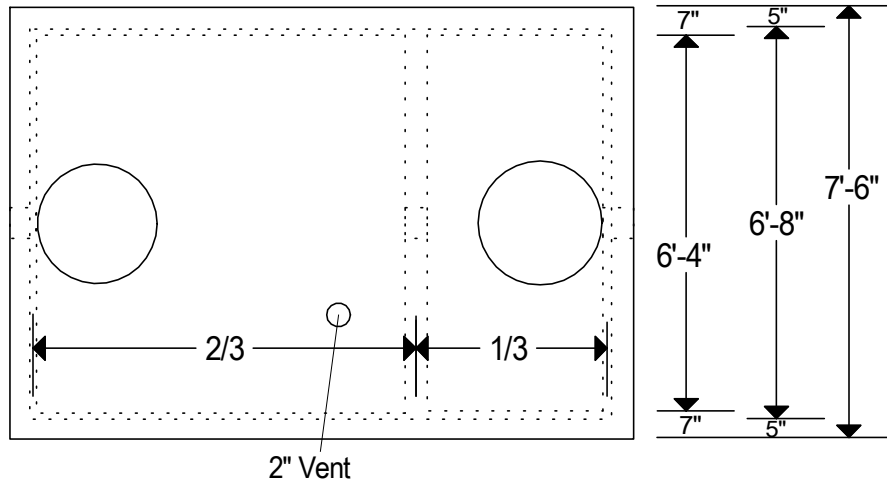
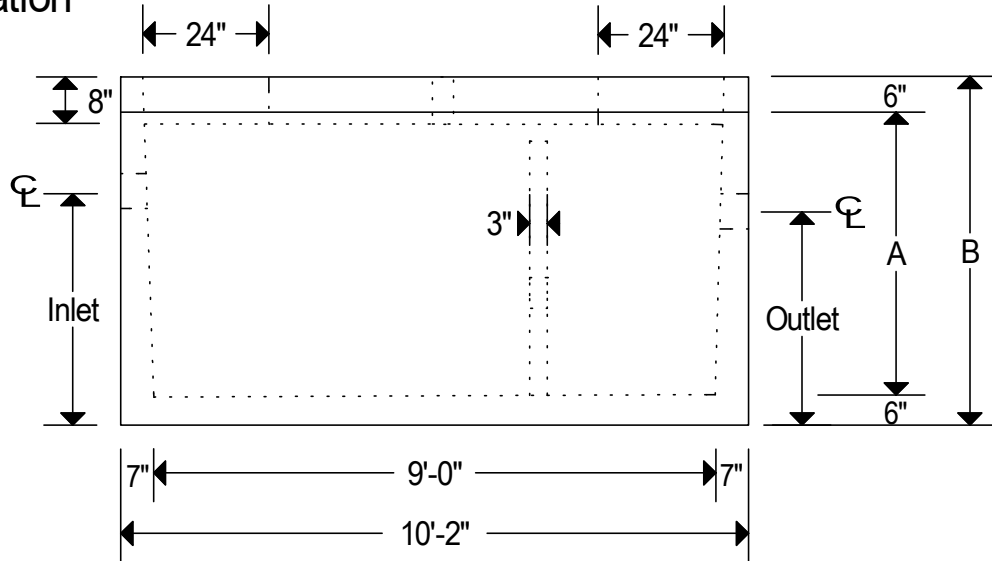


Plan



Elevation



Gallons	Inlet	Outlet	A	B	Weight-Box	Weight-Cover	Concrete Type
1060	40"	38"	48"	60"	17,120 lbs	7,300 lbs	SCC-5000
1250	45 3/4"	43 3/4"	52"	64"	17,560 lbs	7,300 lbs	SCC-5000
1500	54"	52"	62"	74"	16,775 lbs	7,300 lbs	SCC-LT/WT

Notes:

Reinforcing: Box 6 x 6 10/10 Wire Mesh.
 & Insert Cover #5 Rebar @ 12" O.C.E.W. & #5 Rebar Around Holes.
 Lifting Plan: Box Uses Lifting Anchors (PL66G)
 & Insert Cover Uses Wire Rope Anchors (PLLLL G)
 Monolithic Poured Floor. H-20 Loading.
 2- 4"/6" High Pressure Boots On Standard Inlet & Outlet
 And 1- 2" High Pressure Boot On Vent.
 Baffle Height & Location Are Per Local Code.
 Installation Of Pipe Should Also Be According To Local Code.
 Secondary Compartment Has A Volume Equal To 1/3 Of The Total Capacity.
 5,000 P.S.I. Minimum Strength Concrete.
 We Produce A Green And Environmentally Friendly Product.



1060, 1250 & 1500 Gallon
 Grease Or Sand & Oil Interceptor
 No Scale
 Page 61