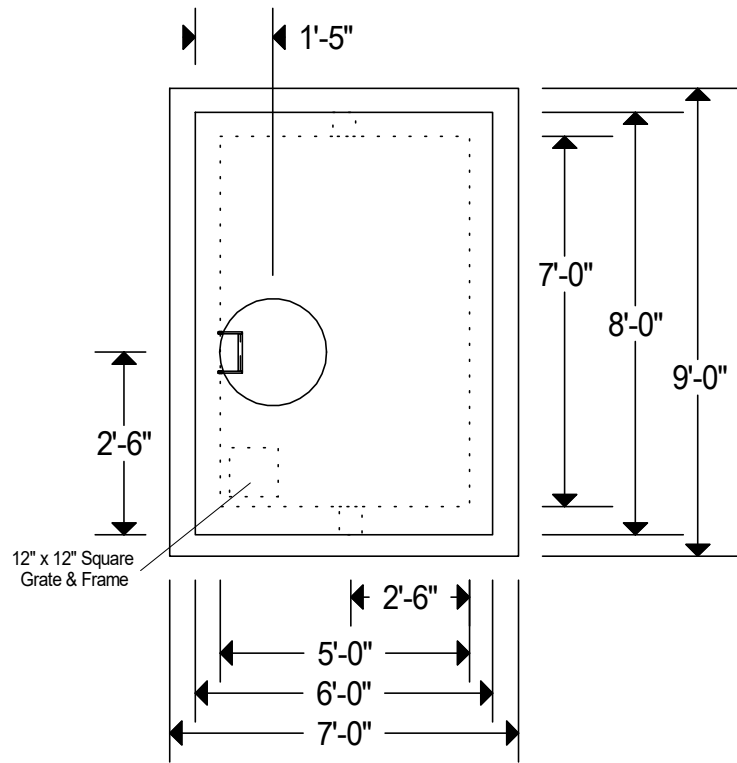
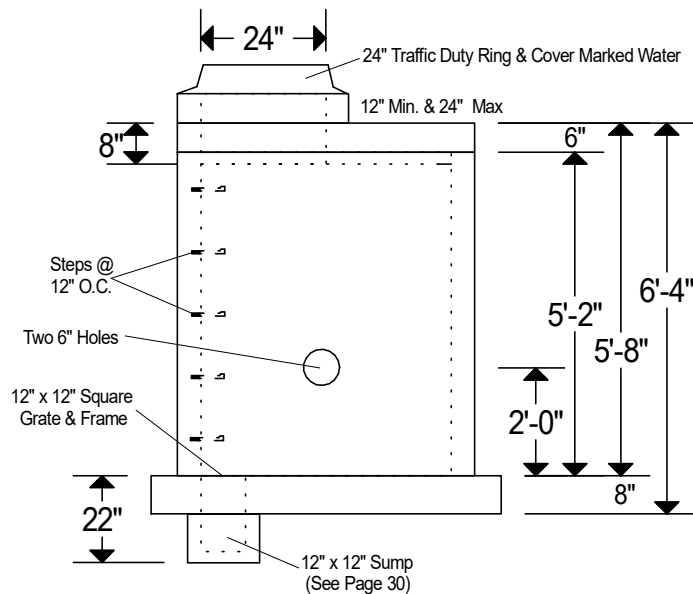


## Plan



## Elevation



### Notes:

Reinforcing: Walls & Base #4 @ 12" O.C.E.W.  
& Cover #5 @ 8" O.C.E.W.

12" x 12" Grate & Frame To Cast Into Base For Sump.

Weight: Vault-16,600 lbs., Cover- 5,000 lbs.

Lifting Plan: Walls On Base Use Wire Rope Anchors (WRA063).  
& Cover Uses All Purpose Anchors (PLGP387G)

5,000 P.S.I. Minimum Strength Concrete.

We Produce A Green And Environmentally Friendly Product.



2" Thornton & Northglenn  
Water Meter Vault

No Scale

Page 58