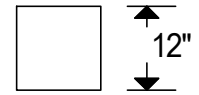
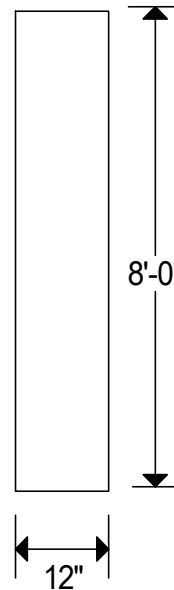
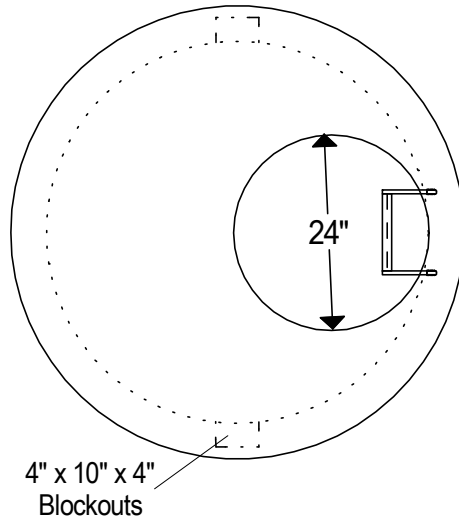
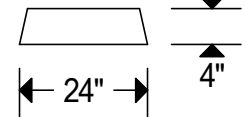


# Plan

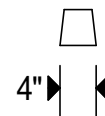


Footers Are  
Required In  
Traffic Areas

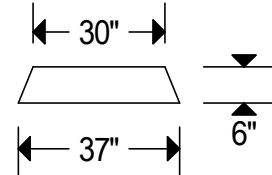
1.5" Meter Blocks



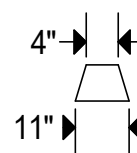
1.5" Meter Blocks  
Side View



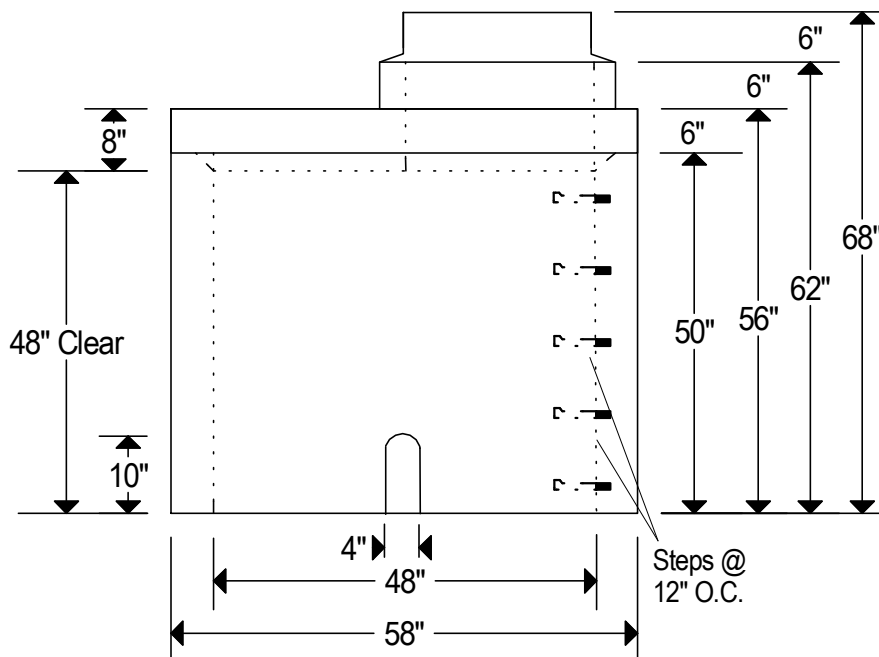
2" Meter Blocks



2" Meter Blocks  
Side View



# Elevation



## Notes:

Reinforcing Meets ASTM C-478.

Weight: Bottom 3,800 lbs. Insert Cover 1,800 lbs. & Footers 1,200 lbs. Each.

Lifting Plan: Bottom Uses Lifting Anchors (PL54G), Insert Cover Uses All Purpose Anchors (PLGP387G), & Footers Use Lifting Anchors (PL54G).

Includes Two 4" x 10" x 4" Blockouts.

Footers Are Required In Traffic Areas 12" x 12" x 8'-0".

5,000 P.S.I. Minimum Strength Concrete.

We Produce A Green And Environmentally Friendly Product.



48" Water Meter Pit

No Scale

Page 3