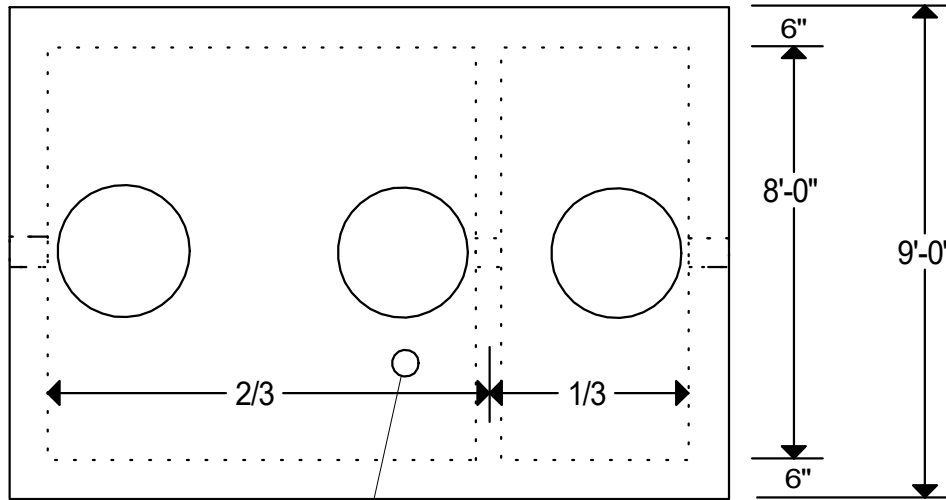
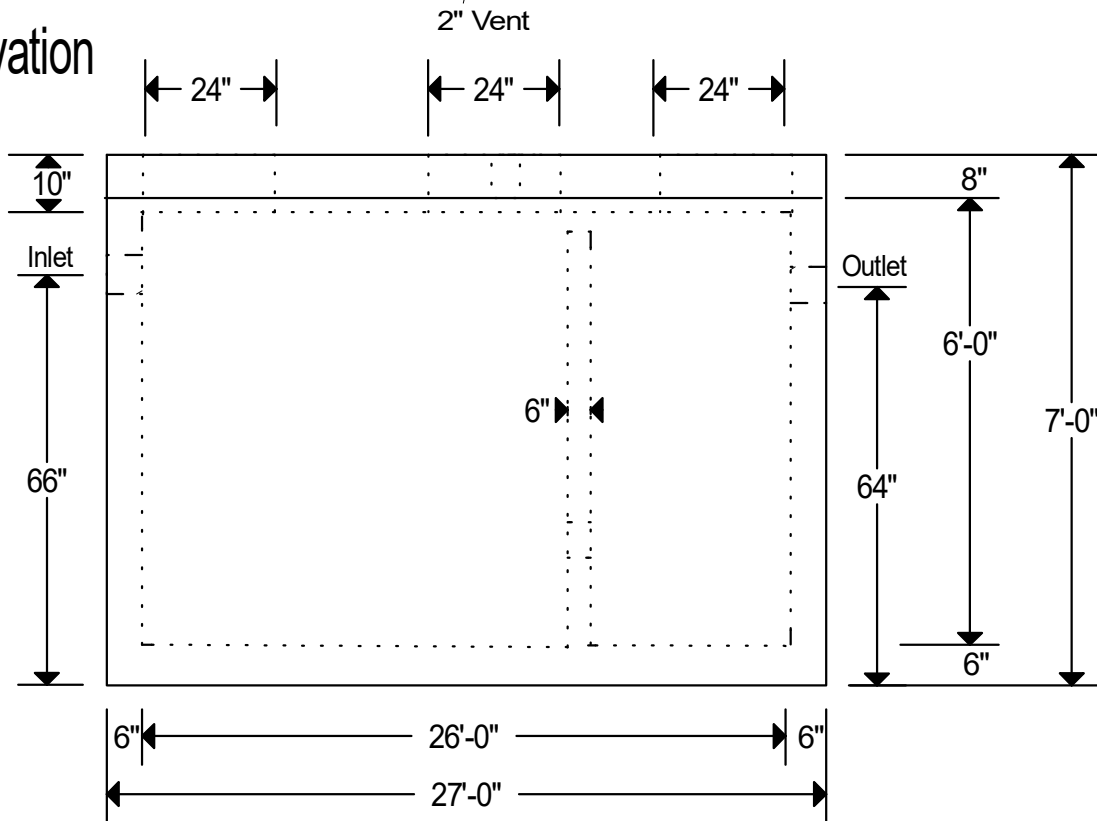


Plan



Elevation



Notes:

Monolithic Poured Floor.

Reinforcement: Walls & Bottom- #4 @ 12" O.C.E.W.

Cover- #5 @ 8" O.C.E.W., #5 Diagonally Around Holes

2- 4"¹/₃" High Pressure Boots On Standard Inlet,Outlet And 1- 2" High Pressure Boot On Vent.

Weight: Box 49,000 lbs. (LT WT), Cover 30,300 lbs.

Baffle Height & Location Of Holes Per Local Code For Each Installation.

Installation Of Pipe Should Be According To Local Code.

Secondary Compartment Has A Volume Equal To 1/3 Of Total Volume.

5,000 P.S.I. Minimum Strength Envirocore Concrete.

We Produce A Green And Environmentally Friendly Product.

Traffic H-20 Loading.

Copeland Enterprises Inc.
 904 South Lipan
 Denver, CO 80223

7,000 Gallon
Grease Or Sand & Oil Interceptor
No Scale