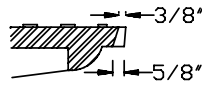
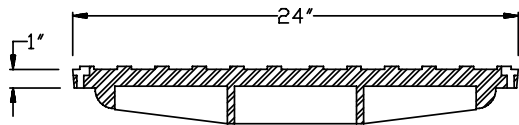
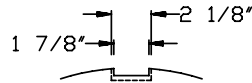
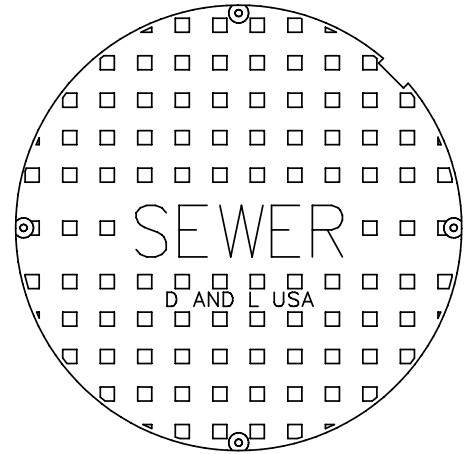
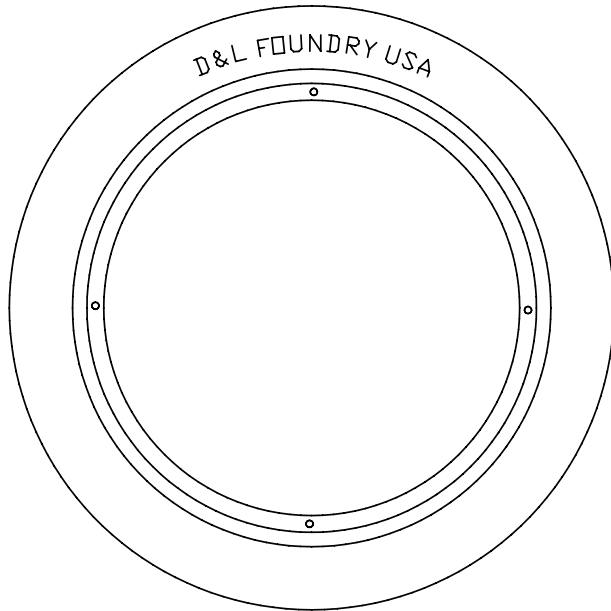
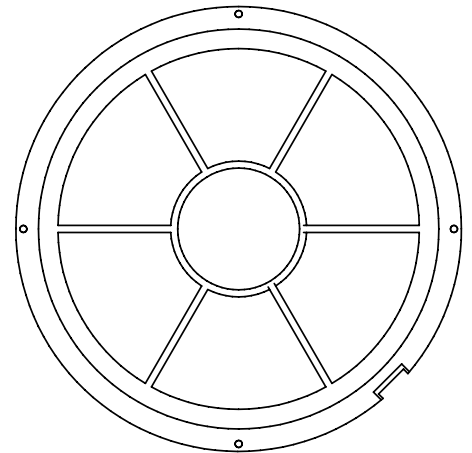
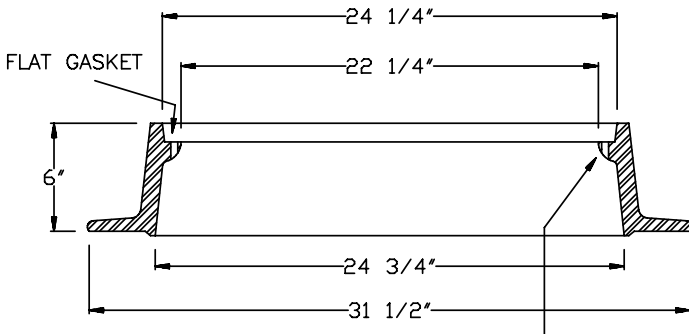


E-1043

Manhole Ring and Cover with Flat Gasket



DETAIL OF PICK HOLE



(4 EACH AT 90 DEGREES)
3/8" COUNTERSUNK STAINLESS STEEL BOLTS

CAST IRON to conform to ASTM A-48, CLASS 35B H-20 Wheel Loading	D&L No. E-1043		 D&L Foundry P.O. Box 1319 Moses Lake, WA 98837 Phone: (509) 765-7952 Fax: (509) 765-8124		
	Est. Weight	255 lbs.			
Designation E-1043	Date of Drawing APR 1994	Prepared by D&L Supply	Scale 1" = 10 1/8"	Sheet Number 1	Total Sheets 1