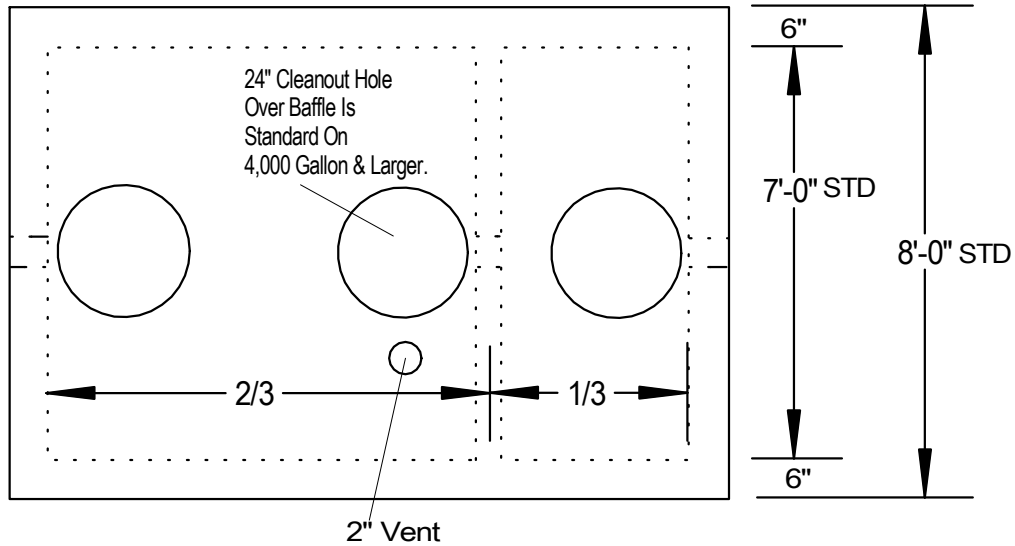
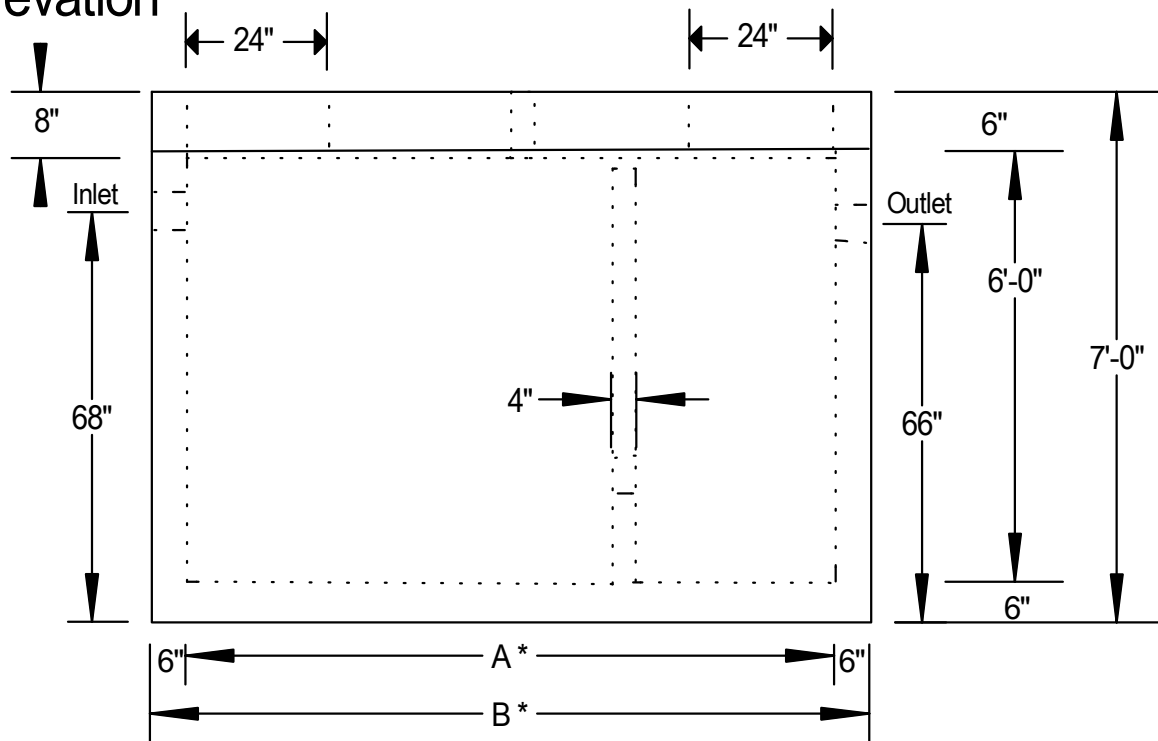


Plan



Elevation



Notes: * Dimensions & Weights Page 89A
 Monolithic Poured Floor.
 Reinforcement: Walls & Bottom- #4 @ 12" O.C.E.W.
 Cover- #5 @ 8" O.C.E.W., #5 Diagonally Around Holes
 2- 4¹/₃" High Pressure Boots On Standard Inlet & Outlet And 1- 2" High Pressure Boot On Vent.
 Baffle Height & Location Of Holes Per Local Code For Each Installation.
 Installation Of Pipe Should Be According To Local Code.
 Secondary Compartment Has A Volume Equal To 1/3 Of Total Volume.
 5,000 P.S.I. Minimum Strength Envirocore Concrete.
 We Produce A Green And Environmentally Friendly Product.
 Traffic H-20 Loading.

Copeland Enterprises Inc.
 904 South Lipan
 Denver, CO 80223

3500 To 5000 Gallon
 Grease Or Sand & Oil Interceptor
 No Scale Drawing Page 89

Dimensions & Weights For Page 89

Gallons	A	B	Box-Weight	Lid-Weight
3500	14'-0"	15'-0"	28,300	10,400
4000	16'-0"	17'-0"	31,100	11,900
4500	18'-0"	19'-0"	33,700	13,300
5000	20'-0"	21'-0"	36,500	14,800

Copeland Enterprises Inc.
904 South Lipan
Denver, CO 80223

3500 To 5000 Gallon
Grease Or Sand & Oil Interceptors
Drawing Page 89A