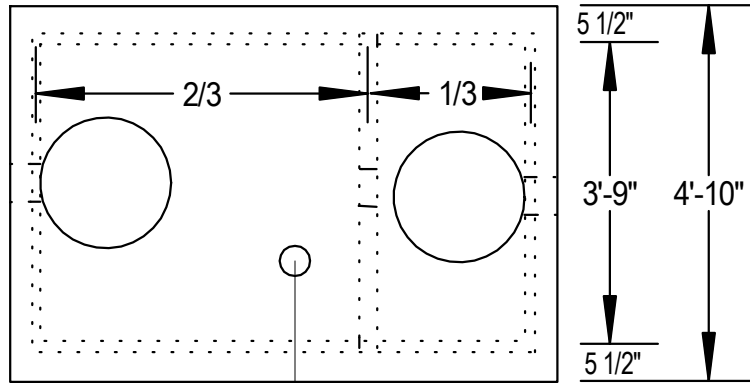
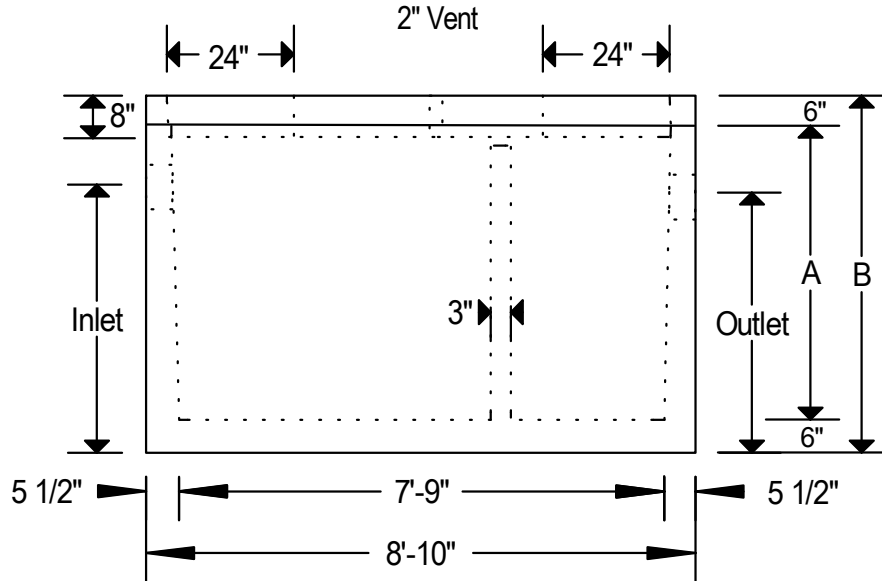


Plan



Elevation



Gallons	Inlet	Outlet	A	B	Weight-Box	Weight-Lid	Model #
500	36"	34"	3'-3"	4'-3"	9,000 lbs	4,000 lbs	11020
800	52"	50"	4'-6"	5'-6"	12,000 lbs	4,000 lbs	11030

Notes:

Reinforcing: Box 6 x 6 10/10 Wire Mesh.
 & Insert Cover #5 Rebar @ 12" O.C.E.W. & #5 Rebar Around Holes.
 Lifting Plan: Use 4 Utility Anchors In Floor (P-75).
 & Insert Cover Use 3 Lifting Plates (FL111).
 Monolithic Poured Floor. H-20 Loading.
 2- 4" / 3" High Pressure Boots On Standard Inlet & Outlet And
 1- 2" High Pressure Boot On Vent.
 Baffle Height & Location Are Per Local Code For Each Installation.
 Installation Of Pipe Should Also Be According To Local Code.
 Secondary Compartment Has A Volume Equal To 1/3 Of The Total Capacity.
 5,000 P.S.I. Minimum Strength Envirocore Concrete.
 We Produce A Green And Environmentally Friendly Product.

Copeland Enterprises Inc.
 904 South Lipan
 Denver, CO 80223

500 & 800 Gallon Grease Interceptor
 Or Sand & Oil Interceptor
 No Scale Page 86