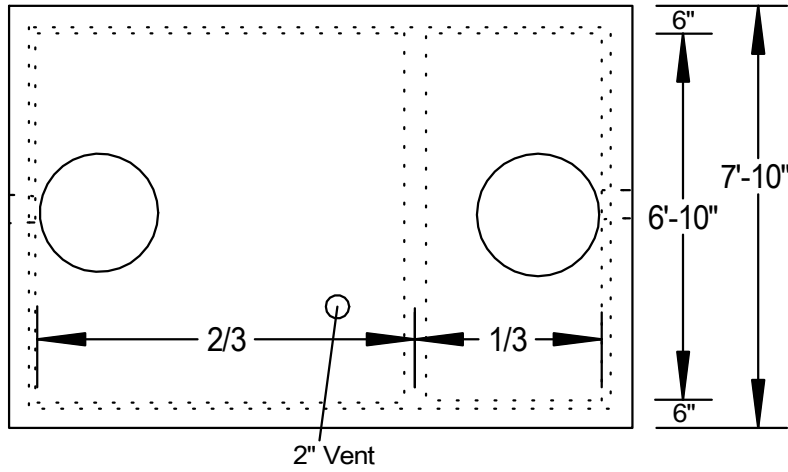
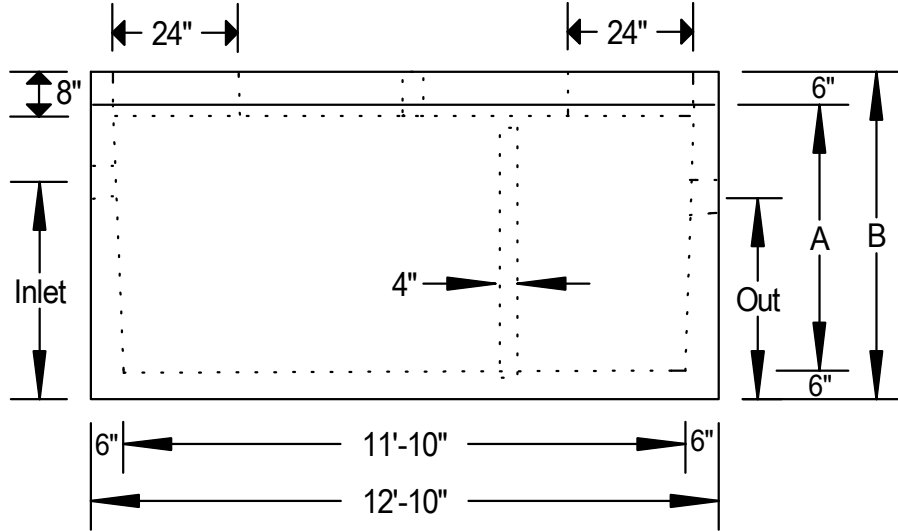


# Plan



# Elevation



Gallons	Inlet	Outlet	A	B	Weight-Box	Weight-Cover	Model #
2000	4'-2"	4'-0"	4'-2"	5'-2"	18,000 lbs	9,000 lbs	2000
2500	4'-11"	4'-9"	5'-0"	6'-0"	21,000 lbs	9,000 lbs	2500
3000	5'-9"	5'-7"	5'-10"	6'-10"	23,000 lbs	9,000 lbs	3000

**Notes:**

Reinforcing: Box #4 Rebar @ 12" O.C.E.W.  
 & Insert Cover #5 Rebar @ 12" O.C.E.W. & #5 Rebar Around Holes.  
 Lifting Plan: Use 4 Utility Anchors In Floor (P-75).  
 & Insert Cover Use 3 Lifting Plates (FL111).  
 Monolithic Poured Floor. H-20 Loading.  
 2- 4" 1/3" High Pressure Boots On Standard Inlet & Outlet And 1- 2" High Pressure Boot On Vent. Baffle Height & Location Are Per Local Code.  
 Installation Of Pipe Should Also Be According To Local Code.  
 Secondary Compartment Has A Volume Equal To 1/3 Of The Total Capacity.  
 5,000 P.S.I. Minimum Strength Envirocore Concrete.  
 We Produce A Green And Environmentally Friendly Product.

Copeland Enterprises Inc.  
 904 South Lipan  
 Denver, CO 80223

2000, 2500, & 3000 Gallon  
 Grease Or Sand & Oil Interceptor  
 No Scale Page 88