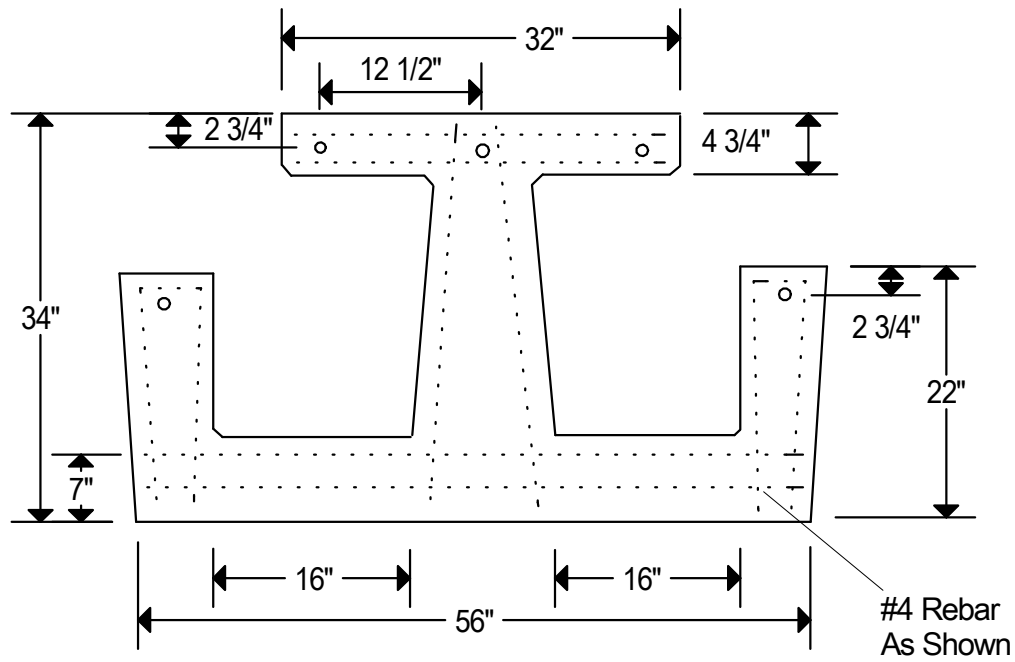


Elevation



Notes:

Each End 3 1/2" Thick.

Holes To Attatch Table & Benches Are 3/4" Dia.

5,000 P.S.I. Minimum Strength Envirocore Concrete.

We Produce A Green And Environmentally Friendly Product.

Model # 11310

Copeland Enterprises, Inc.
904 South Lipan
Denver, CO 80223

Forest Service
Table/Bench Ends
No Scale Page 63